

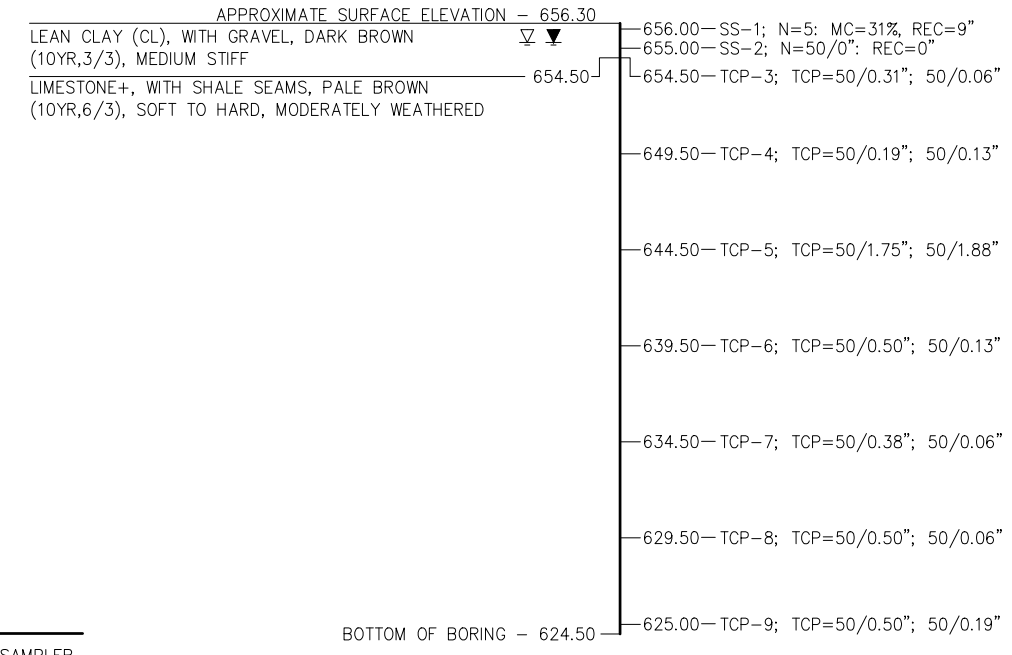
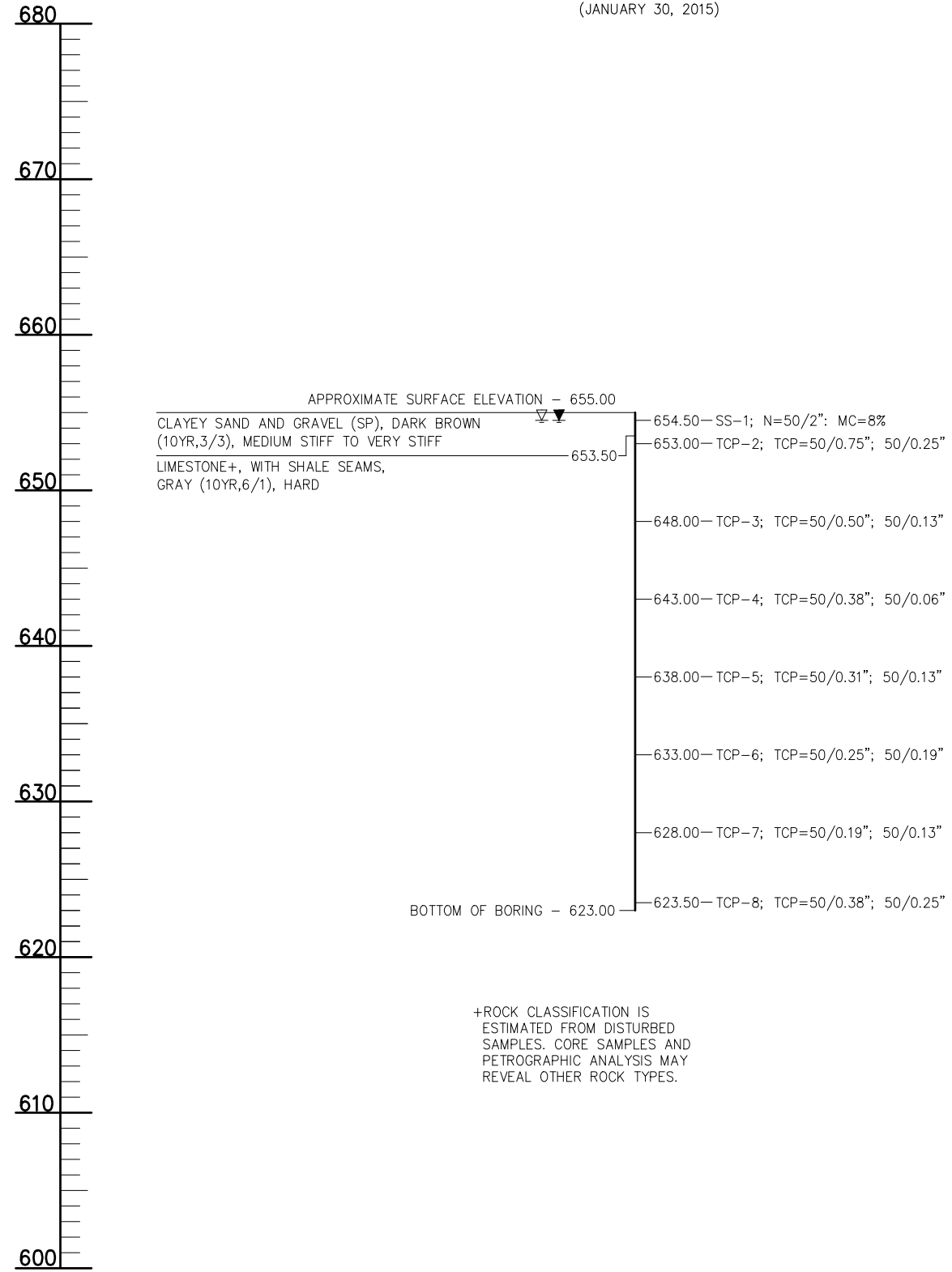
REVISIONS		
REV. NO.	DESCRIPTION	DATE

**BORING NO. B-2A**

STA. 303+43, 10' RT. OF CRL SH-28  
(JANUARY 30, 2015)

**BORING NO. B-3**

STA. 304+15, 17' LT. OF CRL SH-28  
(JANUARY 30, 2015)



**LEGEND**

- SS = SPLIT SPOON SAMPLER
- DB = DIAMOND DRILLING BIT
- N = NUMBER OF BLOWS PER 12 INCHES
- MC = MOISTURE CONTENT
- LL = LIQUID LIMIT
- PL = PLASTIC LIMIT
- PI = PLASTICITY INDEX
- NP = NON-PLASTIC
- #200 = PERCENT PASSING #200 SIEVE
- TCP = TEXAS CONE PENETROMETER
- DCD = DIAMOND CORE BARREL DRILLING
- UCS = UNCONFINED COMPRESSIVE STRENGTH
- RQD = ROCK QUALITY DESIGNATION
- REC = RECOVERY
- ▽ = WATER LEVEL WHILE DRILLING OR SAMPLING
- ▼ = WATER LEVEL AFTER DRILLING
- ▽ = WATER LEVEL 24 HOURS AFTER DRILLING

+ROCK CLASSIFICATION IS ESTIMATED FROM DISTURBED SAMPLES. CORE SAMPLES AND PETROGRAPHIC ANALYSIS MAY REVEAL OTHER ROCK TYPES.

**SITE GEOLOGY:**  
BASED ON THE RESULTS OF THE BORINGS AND INFORMATION PUBLISHED IN THE OKLAHOMA DEPARTMENT OF TRANSPORTATION MANUAL, "ENGINEERING CLASSIFICATION OF GEOLOGIC MATERIALS: DIVISION 8", THE PROJECT IS LOCATED WITHIN THE FORT SCOTT UNIT. THIS UNIT CONSISTS OF LIMESTONE AND SHALE.

DESIGN		SH-28 OVER SALT CREEK	NOWATA COUNTY
DETAIL		BRIDGE "A"	
CHECK		<b>FOUNDATION REPORT (SHEET NO. 2 OF 3)</b>	
GUY ENGINEERING SERVICES, INC.			
		STATE JOB PIECE NO. 28857(04)	SHEET NO. B004

TO OBTAIN THE COMPLETE GEOTECHNICAL REPORT CONTACT THE OFFICE ENGINEER DIVISION OF THE OKLAHOMA DEPARTMENT OF TRANSPORTATION AT (405) 521-2625.

Monday, July 31, 2017 4:12:03 PM V:\12-716E SH-28 Salt Creek JP\_28857\STRUCTURAL\DWG\Salt Creek - FOUNDATION REPORT.dwg